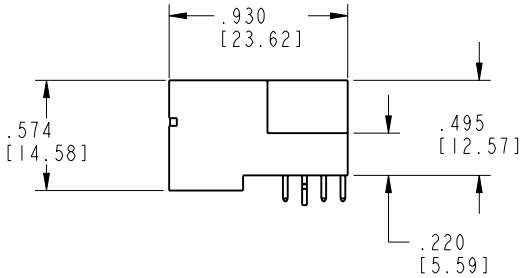
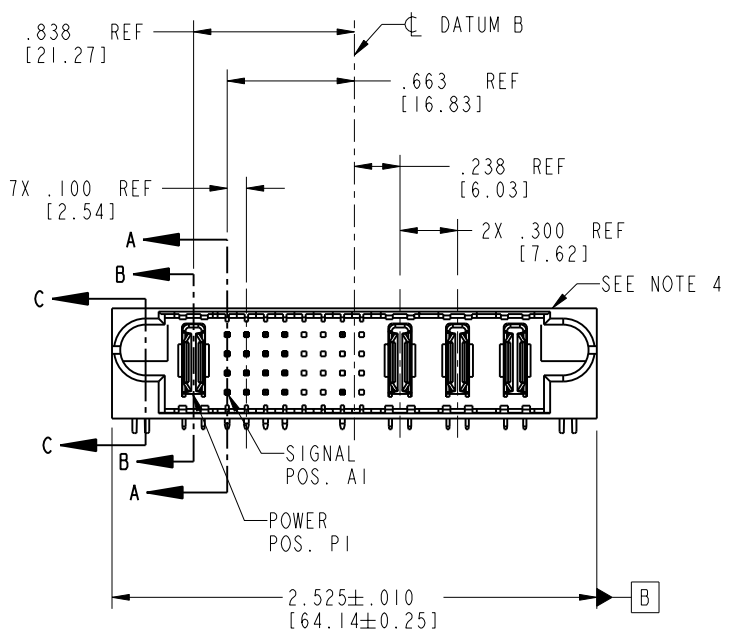
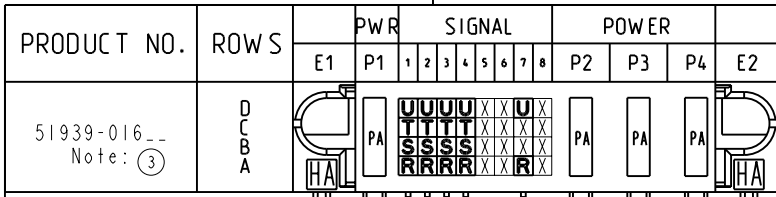


Tous droits strictement réservés. Reproduction ou communication o des liers interdite sous quelque forme que ce soit sans autorisation écrite du propriétaire. Propriete de c FCI. Droits de reproduction FCI.

All rights strictly reserved. Reproduction or issue to third parties in any form whomever is not permitted without written authority from the proprietor. Property of FCI. Copyright FCI.



CODE	DIM "M" MATING LENGTH	CONTACT TYPE
R	.270 [6.86]	SIGNAL
S	.270 [6.86]	SIGNAL
T	.270 [6.86]	SIGNAL
U	.270 [6.86]	SIGNAL
PA	N/A [N/A]	POWER
HA	N/A [N/A]	HOLD-DOWN
X	OMITTED	OMITTED

mat'l code SEE NOTE 2				tolerances unless otherwise specified		CUSTOMER		 www.fciconnect.com			
lfr	ecn no.	dr	date	linear	.XX±.01/0.X±0.3	COPY					
A	V20856	DAI	04/30/02		.XXX±.005/0.XX±0.13	projection					
B	DG05-0182	SJ	06/22/05	angles	.XXX±.0020/0.XXX±0.051						
C	DG06-0008	JMG	01/07/06	dr	D. INGRAM 04/30/02	INCH/MM					
				engr	J. SWAIN 04/30/02	scale					
				chr	J. SWAIN 04/30/02	1:1					
				appd	J. SWAIN 04/30/02						
sheet index	revision sheet	C	C	C	C			product family	PwrBlade	code	213
		1	2	3	4			size	dwg no	sheet	1 of 4

cage code 22526

Pro/E

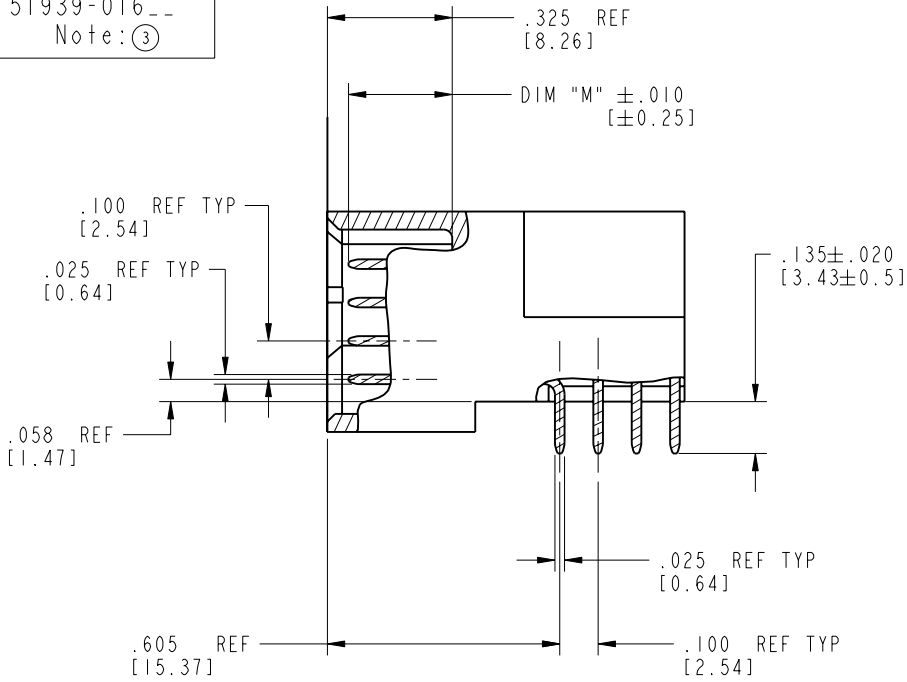
Tous droits strictement réservés. Reproduction ou communication o des liers interdite sous quelque forme que ce soit sans autorisation écrite du propriétaire. Propriete de c FCI. Droits de reproduction FCI.

FCI

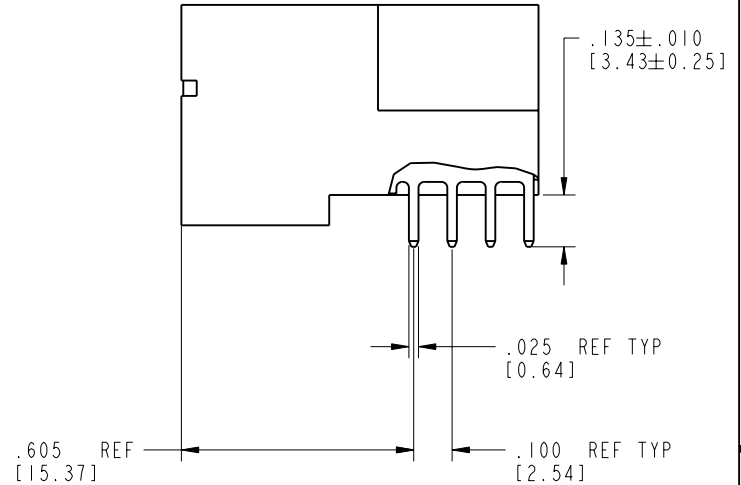
All rights strictly reserved. Reproduction or issue to third parties in any form, whatever is not permitted without written authority from the proprietor. Property of FCI. Copyright FCI.

PRODUCT NUMBER

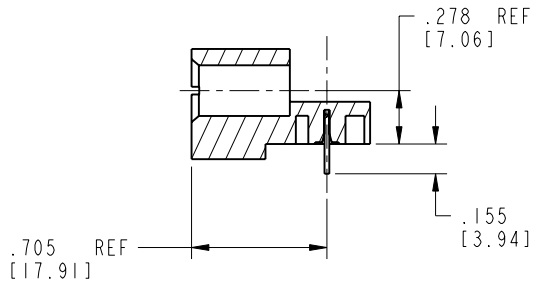
51939-016--
Note: (3)



BROKEN-OUT SECTION A-A
SCALE 2:1



BROKEN-OUT SECTION B-B
SCALE 2:1



SECTION C-C

mat'l code				SEE NOTE 2		tolerances unless otherwise specified		CUSTOMER		FCI www.fciconnect.com	
lfr	ecn no.	dr	date	linear	.XX±.01/0.X±0.3	projection	COPY		title IP + 32S + 3ACP		
c				angles	.XXX±.005/0.XXX±0.13		RIGHT ANGLE SOLDER HEADER		product family PwrBlade		
				dr	.XXX±.0020/0.XXX±0.051		INCH/MM		code 213		
				engr	0° ± 2°	scale 1:1		size 51939-016		sheet 2 of 4	
				chr	D. INGRAM 04/30/02			A			
				appd	J. SWAIN 04/30/02						
sheet index		revision sheet									

cage code 22526

Pro/E

PDM: Rev:C

STATUS: Released

Printed: Aug 14, 2007

Tous droits strictement réservés. Reproduction ou communication o des liers interdite sous quelque forme que ce soit sans autorisation écrite du propriétaire. Propriété de c FCI. Droits de reproduction FCI.

All rights strictly reserved. Reproduction or issue to third parties in any form, whatever is not permitted without written authority from the proprietor. Property of FCI. Copyright FCI.



PRODUCT NUMBER

51939-016__
Note: (3)

DIM XXX
SEE NOTE 9

PCB LAYOUT
AND DATUM B ϕ

1.278 SEE NOTE 10
[32.45]

.838
[21.27]

.663
[16.83]

7X .100
[2.54]

.238
[6.03]

2X .300
[7.62]

SEE NOTE 10
3 SIDES

ϕ .040 \pm .003 TYP
[1.02 \pm 0.07]
SEE NOTE 8

ϕ .004 [0.1] X Y Z

2X ϕ .098 \pm .003
[2.49 \pm 0.07]
SEE NOTE 7

ϕ .004 [0.1] X Y Z

3X .100 TYP
[2.54]

.660
[16.76]
SEE NOTE 10

2X .300
[7.62]

.200 TYP
[5.08]

1X .100
[2.54]

1X .050
[1.27]

3X .100
[2.54]

3X .050
[1.27]

1.113
[28.26]

2.225
[56.52]

2.555 SEE NOTE 10
[64.9]

PCB EDGE

RECOMMENDED PCB LAYOUT

mat'l code				SEE NOTE 2		tolerances unless otherwise specified		CUSTOMER		 www.fciconnect.com	
lfr	ecn no.	dr	date	linear	.XX \pm .01/0.X \pm 0.3	projection		COPY		title	
C				angles	.XXX \pm .005/0.XX \pm 0.13			INCH/MM		IP + 32S + 3ACP	
				dr	.XXX \pm .0020/0.XXX \pm 0.051	scale		1:1		RIGHT ANGLE SOLDER HEADER	
				engr	D. INGRAM 04/30/02	product family		PwrBlade		code	
				chr	J. SWAIN 04/30/02	size		A		213	
				appd	J. SWAIN 04/30/02	dwg no		51939-016		sheet	
sheet index	revision sheet					3 of 4					

cage code 22526

Pro/E

PDM: Rev:C

STATUS: Released

Printed: Aug 14, 2007

Tous droits strictement reserves. Reproduction ou communication o des liers interdite sous quelque forme que ce soit sans autorisation écrite du propriétaire. Propriete de c FCI. Droits de reproduction FCI.



All rights strictly reserved. Reproduction or issue to third parties in any form, whomever is not permitted without written authority from the proprietor. Property of FCI. Copyright FCI.

PRODUCT NUMBER

51939-016--
Note: ③

NOTES:

1. DIMENSIONS AND TOLERANCES ARE IN ACCORDANCE WITH ASME Y14.5M, 1994 UNLESS OTHERWISE SPECIFIED.

CONNECTOR NOTES:

- 2. HOUSING MATERIAL: UL 94 V-0 GLASS FILLED HIGH-TEMP THERMOPLASTIC
POWER CONTACT MATERIAL: COPPER ALLOY
SIGNAL PIN MATERIAL: COPPER ALLOY
- 3. 51939-016;51939-016LF;51939-016GLF PLATING SPEC. SEE PRINT:10064183
- 4. MANUFACTURER'S NAME, P/N, AND DATE CODE TO APPEAR ON THIS SURFACE.
- 5. PRODUCT SPECIFICATION GS-12-149.
APPLICATION SPECIFICATION BUS-20-067.

PCB NOTES:

- 6. ALL HOLE DIAMETERS ARE FINISHED HOLE SIZE.
- 7. MOUNTING HOLES, WHERE APPLICABLE, ARE UNPLATED.
- 8. $\varnothing .0453 \pm 0.0010$ [1.151 \pm 0.025] DRILLED HOLES PLATED WITH 0.0003 [0.008] MIN SnPb OVER .001 [0.03] TO .003 [0.08] Cu PLATING TO ACHIEVE $\varnothing .040 \pm .003$ [1.02 \pm .07] HOLE.
- 9. "DIM XXX" TO BE DETERMINED BY THE CUSTOMER.
- 10. CONNECTOR KEEP-OUT ZONE.

mat'l code		SEE NOTE 2		tolerances unless otherwise specified		CUSTOMER		 www.fciconnect.com	
lfr	ecr no.	dr	date	linear	.XX±.01/0.X±0.3	COPY			
C				projection	.XXX±.005/0.XX±0.13			title IP + 32S + 3ACP RIGHT ANGLE SOLDER HEADER	
				angles	.XXX±.0020/0.XXX±0.051			product family PwrBlade code 213	
				dr	D. INGRAM 04/30/02	INCH/MM		size dwg no	
				engr	J. SWAIN 04/30/02	scale 1:1		A 51939-016 sheet 4 of 4	
				chr	J. SWAIN 04/30/02				
				appd	J. SWAIN 04/30/02				
sheet index	revision sheet								

cage code 22526

Pro/E

PDM: Rev:C

STATUS: Released

Printed: Aug 14, 2007